

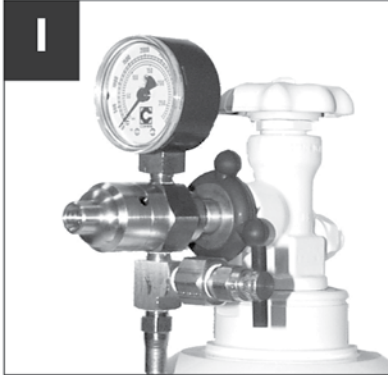


# Remote Control Confetti Cannon Instruction Sheet

### Kit Includes:

- 1 Confetti Cannon
- 1 Standard Size Barrel
- 2 Hand Held Detonators
- 1 Receiver
- 8 AAA Batteries
- 2 Barrel Caps & Load Launcher Sets
- 1 Helium/Nitrogen Recharge Hose (Included with Kit Only)

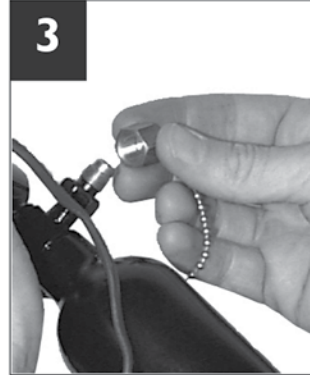
## Charging the Cannon



Hand-tight connect the regulator to a helium or nitrogen cylinder. The cylinder must have a minimum of 800 psi gas pressure to properly charge the cannon.



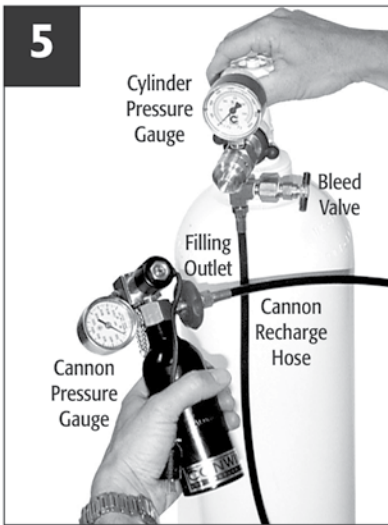
Make sure the bleed valve on the regulator is closed before filling the cannon cylinder.



Remove the cap from the filling outlet on the cannon. The cap has a bead chain attached to insure that it doesn't get misplaced.



Hand-tight connect the filling hose to the cannon.

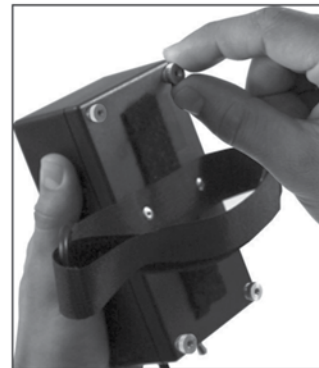


Slowly open the cylinder valve. The preset regulator on the filling hose will automatically recharge the cannon with the proper amount of gas. The gauge on the cannon will read approx. 800 psi when the cannon is fully charged. Close the cylinder valve. Open the bleed valve to release the pressure from the filling hose. Remove the filling hose from the cannon. Screw the cap back on the filling outlet and tighten.

### IMPORTANT:

The 2011 Recharge Hose is preset at 800psi. Charge the cannon using only the Recharge Hose included in this kit. Do not fill the cylinder using a Recharge Hose prior to the 2011 model.

## Installing the Batteries



Unscrew the back panel from the receiver and insert 8 AAA batteries and screw the panel back on.

**IMPORTANT:** Replace with **ONLY INDUSTRIAL STRENGTH** AAA batteries, after each use.

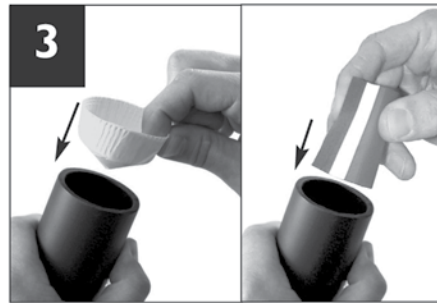
## Loading the Barrel



Using scissors, make one cut to the center of the launcher.



Fold one side of the Launcher over the other and tape the two sides together.



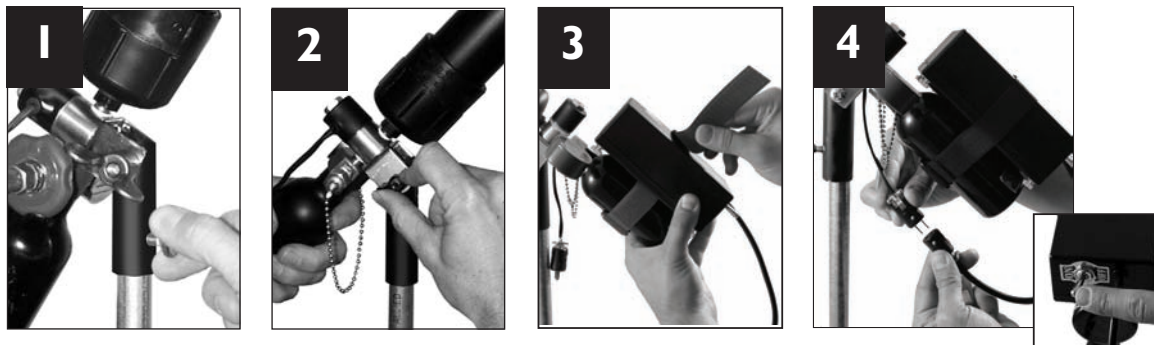
Slide the pointed end of the Launcher to bottom of the barrel. Fill the barrel with confetti and/or streamers. The Launcher will evenly distribute the force of gas when the cannon is fired and maximize the range and distance the load covers. To avoid clumping, do not tightly pack the confetti in the barrel.



Place a Barrel Cap over the opening of the barrel and tape in place. When the cannon is fired the pressure inside the barrel builds until the Barrel Cap bursts releasing the confetti and/or streamers with maximum impact.



# Rigging the Confetti Cannon



1. Place the cannon mounting sleeve over the 1/2" conduit and firmly tighten the thumb screw to secure the cannon in place. Use a heavy weight at the base of the column (See Base Plates featured in Related Products below).
2. The angle of the cannon barrel can be adjusted to achieve different effects. Select the proper angle for the event and tighten the wing nut to hold the cannon in place.
3. Attach the receiver to the cannon cylinder by securely tightening the Velcro® strap.
4. Firmly plug the cannon into the receiver and turn the switch to the "ON" position.

**SAFETY WARNING: When rigging the Confetti Cannon, always allow a 10-foot (3m) safety-radius of space between people and cannon barrel.**

### IMPORTANT TIPS:

- Before loading the Confetti Cannon, test fire the cannon to insure the column is properly secured. The cannon will kick when fired. It is important to verify that the column is properly weighted.
- Prior to the event, always verify that the batteries are fully charged. To avoid accidentally firing the cannons, place the hand held detonators in a safe location where they will not be handled or accidentally pressed until the event is ready to begin.

# Firing the Cannon



On cue, **push and hold down** the hand held detonator button until the cannon has completely fired.

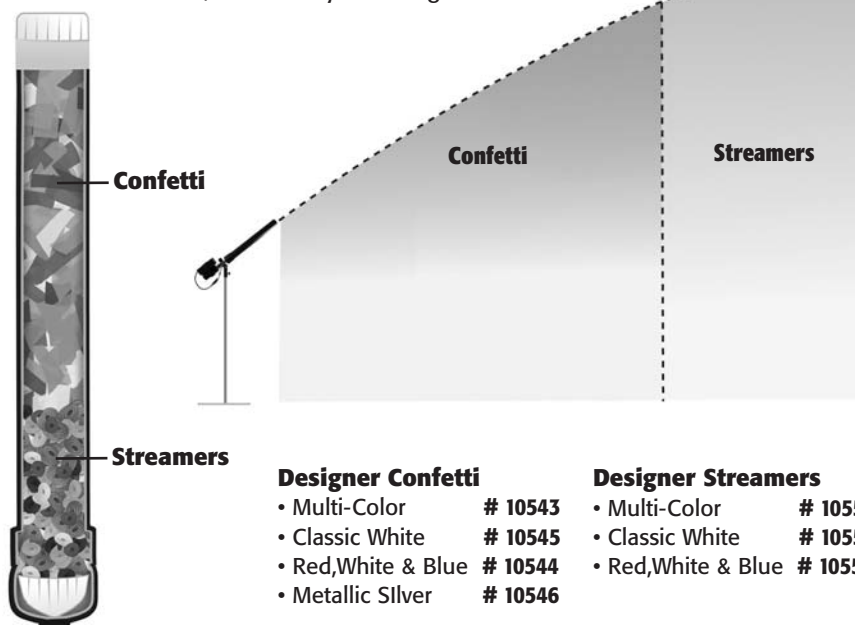
### IMPORTANT:

Once the cannon has fired push the "OFF" button to turn the cannon off, and prevent cannon from misfiring.

**Note:** Each receiver and set of hand held detonators have a code labeled on the back of each component. These codes match one another, making it easy to decipher which receiver corresponds to the correct hand held detonator when working with multiple cannons.

## Maximize Distance

**For best results:** To maximize the firing distance when using confetti mixed with streamers, always load the Designer Streamers into the barrel first, followed by the Designer Confetti.



\*Firing distance is directly affected by the height and angle of the barrel & environmental conditions.

## Related Products



### Barrel Caps & Load Launchers

25 Sets & 60 yds. (55m) of tape.

Conwin # 10559



### Designer Base Plates

Conwin's uniquely designed 14-pound white base plates feature a rigging point for attaching archline, and a convenient carrying handle that holds 2 base plates and 2 risers.

Conwin # 37340



### Heavy Weight Sandbag

Designed specifically for the balloon industry, the Heavy Weight Sandbag holds up to 25 lbs of sand or gravel, and features a convenient carrying strap that serves as a great rigging point to secure large arches, columns and balloon sculptures.

Conwin # 36099

## Service & Warranty

For assistance with service & repair issues, or for warranty information, please visit [ConwinOnline.com](http://ConwinOnline.com), or call (818)246.9233



CONWIN INC.  
4510 Sperry Street • Los Angeles, CA 90039  
Phone (818) 246-9233 FAX (818) 246-6862

Online  
Projects  
Designs  
Galleries  
and more!

[ConwinOnline.com](http://ConwinOnline.com)

06172011

## Conwin's Portfolio Builders

### Update Your Portfolio!

A picture is worth a thousand words. Is your portfolio up to date on the latest? Conwin's Portfolio Builder images are the perfect solution for making winning presentations to your clients. Thirty-two photo quality images are available in the full series.



Visit [www.ConwinOnline.com](http://www.ConwinOnline.com) today!