



# Balloon Bulb Set Instruction Sheet

## Balloon Bulb Set Includes:

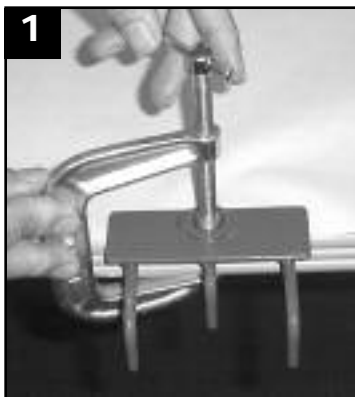
- 2 Units w/ 8ft Powercords
- 1 Clamp
- 1 Balloon Stretching Tool
- 1 Carrying Case

View a demonstration of the Balloon Bulbs on Conwin's Tools of the Trade DVD

### General Precautions

- To prevent the risk of electrical shock, do not use the Balloon Bulb Set outdoors when weather conditions are wet. Never install Balloon Bulbs on a wet floor or work area.
- If the Balloon Bulb Set malfunctions or is damaged in any way discontinue use and unplug unit from electrical outlet. Contact an authorized Conwin Service Center for details on how to receive service.
- Replacement Bulbs are available from your Conwin Distributor  
**WARNING: DO NOT USE INCANDESCENT (standard) LIGHT BULBS**

### Attach the Balloon to The Balloon Bulb



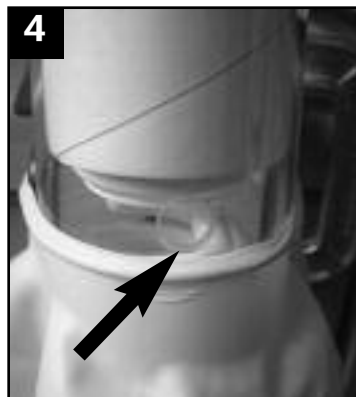
1 Clamp the Balloon Stretching Tool to a table or other stable surface. The clamp should be on the left side of the tool.



2 Roll the neck of a large balloon down to the body of the balloon.



3 Stretch the balloon onto the tool, and insert the balloon bulb unit.



4 Insert the Balloon Bulb into the stretched balloon until you reach the inflation hole.

### Inflate the Large Balloon



**Important: ONLY USE A LOW-PRESSURE AIR BLOWER.** Do not use a helium inflator, Dual Sizer, or Duplicator 2 to inflate the large balloon.

To properly inflate the large balloon, place the base of the Balloon Bulb over the outlet of a Conwin Air-Pro or Air Force 4 Inflator. When the large balloon is inflated to desired size quickly remove the Balloon Bulb from the inflator and roll the neck of the balloon over the inflation hole to seal the balloon. Roll up the neck of the balloon to add or release air to adjust the size of the balloon.

See Creative Balloon Bulb Designs at [www.ConwinOnline.com](http://www.ConwinOnline.com)



### Rig and Light the Balloon



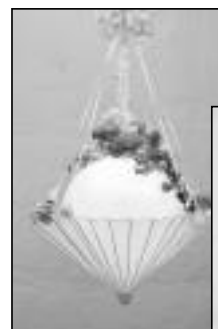
#### Mount on Conduit

Place the Balloon Bulb on top of a conduit and tighten the thumb screw to lock into place.

#### Hanging Balloon Bulbs

The Balloon Bulb can also be suspended from the ceiling by threading dacron archline through the hole in the base of the unit and tying it securely to the ceiling. (See right)

Use extension cords to rig Balloon Bulbs longer distances. To light the Balloon Bulb, plug the power cord into a wall socket or power strip.





# Related Products For The Balloon Bulb Set

## Balloon Bulb Accessories



**Replacement Bulbs**  
Ask your distributor for details.

Visit  
**www.ConwinOnline.com**  
for  
**Great Projects Using  
Balloon Bulbs!**



## Air Force 4 Inflator

Quadruple your production with the Air Force 4! It Features four outlets for fast simultaneous inflation and a powerful motor. Outlets feature special tips for inflating small balloons. It also has a 25' detachable electrical cord that is convenient for on-the-job decorating. The Balloon Bulb base is designed to fit perfectly on an Air Force 4 for quick and easy inflation of the larger balloon.



## The Air-Pro

The Air-Pro is ideal for fast inflation of air-filled balloons. The Air-Pro quickly and easily inflates of all size balloons by pressing down on the push valve outlet. The push valve features an extension tip outlet for inflating small balloons and foil balloons. The Air-Pro motor runs only during the inflation cycle making it an ideal inflator for retail settings. Unit features a convenient carrying handle and 6-foot power cord.



## Precision Air Inflator

The state-of-the-art Precision Air automatically sizes air-filled latex balloons without heavy cylinders, noisy air compressors, or time-consuming templates. The powerful motor with digital controls accurately sizes two air-filled balloons simultaneously at the touch of the foot pedal.

The Precision Air is perfect for making air-filled balloon columns for use with Balloon Bulbs.

See "Inflate The Large Balloon" on Page 1.



## Confetti Cannons

Create exciting special effects for weddings, corporate events, parties, etc.! Conwin's new battery-triggered Confetti Cannons are powered by a small rechargeable cylinder using nitrogen or helium gas.



## Deluxe Exploder Kit

Create amazing special effects for: Weddings, Corporate Events, Confetti Drops, Parties, etc. Conwin's Pneumatic Balloon Exploders are safe, easy to use, and are non-electric. Powered by helium or nitrogen gas, they are perfect for exploding balloon walls and for special effects created with confetti-filled balloons.

## Service & Warranty

For assistance with service & repair issues, or for warranty information, please visit [ConwinOnline.com](http://ConwinOnline.com), or call (818)246.9233



Online  
Projects  
Designs  
Galleries  
...and more!

## Conwin's *Portfolio Builders*

### Update Your Portfolio!

A picture is worth a thousand words. Is your portfolio up to date on the latest? Conwin's Portfolio Builder images are the perfect solution for making winning presentations to your clients. Thirty-two photo quality images are available in the full series.



CONWIN INC.  
4510 Sperry Street • Los Angeles, CA 90039  
Phone (818) 246-9233 FAX (818) 246-6862

[ConwinOnline.com](http://ConwinOnline.com)

03162006

Visit [www.ConwinOnline.com](http://www.ConwinOnline.com) today!