



# Operating Instructions for CONWIN Balloon Inflators

View product demonstrations on Cowin's Tools of the Trade DVD or visit [ConwinOnline.com](http://ConwinOnline.com)

## Inflator Hook-Up

1. Firmly hand tighten inflator to the cylinder valve by turning the handwheel clockwise. Do not use a wrench.
2. Slowly open the cylinder valve. Cylinder pressure locks inflator in place leak-free.
3. Feed ribbon through guide hole.

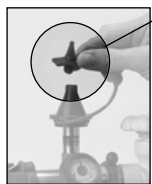
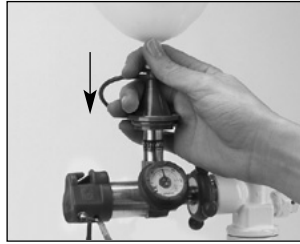
## Inflator Removal

1. Close cylinder valve firmly.
2. Release pressure by pushing down on the push valve or by tilting the tilt valve outlet.
3. Unscrew hand-tight connection and remove inflator from cylinder.

## Inflating Latex Balloons

### Push Valve Models

1. Place the balloon over the latex balloon Push Valve Outlet and press downward.
2. When balloon has reached the desired size, remove it from the outlet. Tie balloon using Conwin's balloon tying discs. See other side for instructions.



### Push Valve Extension Outlet

Push Valve Extension Outlet presses into Push Valve and allows user to inflate both foil balloons and valved latex balloons. Tapered tip adjusts to valved latex balloons and easily slides into the neck of foil balloons. Remove the outlet when inflating 9-inch and larger latex balloons.

### Tilt Valve Models

1. Place the latex or foil balloon over the tapered flex-tip outlet and tilt valve to inflate balloon.
2. When balloon has reached desired size, remove it from the outlet. Tie balloon using Conwin's balloon tying discs. See other side for instructions.

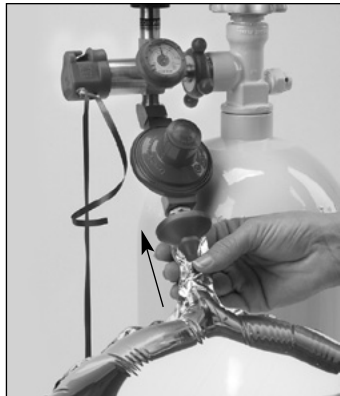


Note: Gauge may orient in any position based on the threads of the cylinder.

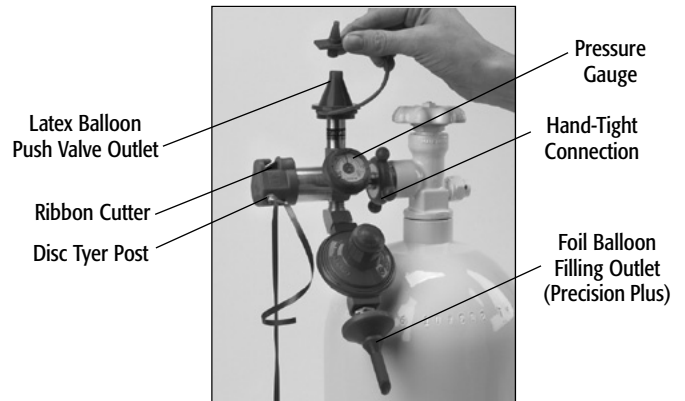
## Inflating Foil Balloons

### Foil Balloon Inflation

1. Slide the tapered foil filling outlet into neck of balloon and press upward.
2. When the foil balloon has reached the proper size and pressure, the inflator will automatically shut off the flow of helium. This guarantees maximum balloon flying time and eliminates costly foil balloon breakage. The automatic inflator will work on all size and shape foil balloons.



## Inflator Components



## Inflating Latex Balloons with a 60/40 Mix of Helium and Air

The filling outlet has a tapered tip to easily fit large size latex balloons. Place the balloon over the latex outlet and press downward until balloon has reached desired size. Use Conwin's Balloon Tying Disc to quickly and easily tie and attach ribbon (see back page).



### Inflate Latex Balloons with 100% Helium

By covering the air intakes, the 60/40 Helium/Air Inflator will inflate balloons with 100% helium. Cover the air intakes with your fingers or with tape for prolonged use with 100% helium. Use Conwin's Balloon Tying Disc to quickly and easily tie and attach ribbon (see back page).





## Related Products

**IMPORTANT SAFETY NOTICE:** To insure worker safety, cylinders should always be secured in the work area and during transportation. Conwin's Cylinder Safety Stand and Cylinder Safety Wall Bracket secure all size cylinders and meet required safety standards.

### Cylinder Safety Stand

Features durable steel construction designed to support all size cylinders. A must for worker safety in the shop and on the job.



### Cylinder Safety Bracket

Provides an economical solution to securing cylinders in the work area. Also works well when mounted to floor of delivery van to secure cylinder during transport.



## Balloon Decor Master Series DVD Set (Volumes 1-3)

### Get inspired & grow your business!

Learn a variety of new techniques and design tips from five of the balloon industry's top instructors. Jodie Norris, Dee White, and Sue Marston-Weston, renowned European designers, showcase the latest trends in combining non-round balloons with classic balloon decor, while Linda Bruce and Steven Mayhew, two innovative designers from the USA, feature a variety of best-selling arrangements.

From fantasy flowers to balloon walls, each of the 15 step-by-step designs are clearly presented with easy to follow instructions. After mastering the new designs, you'll be ready to make professional client presentations with the twenty-four Portfolio Builder images included inside.

### Set Includes:

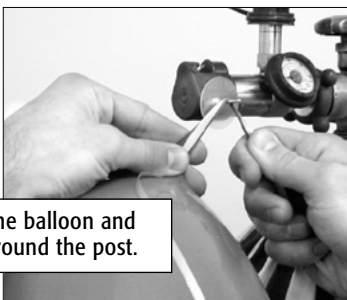
- 3 DVDs with 15 Step-by-Step Designs
- 24 New 8.5" X 11" Portfolio Builders (Series 6, 7 & 8) printed on 8.5 X 11" heavy weight glossy stock.
- Interactive DVD-Rom with Web Links

**Learn More at  
ConwinOnline.com**

## Conwin Balloon Tying Discs The Fast and Easy Way to Tie Latex Balloons!

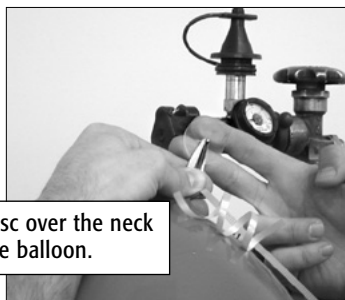
Discs available in convenient 100 packs and 1000 packs from your Conwin distributor.

1



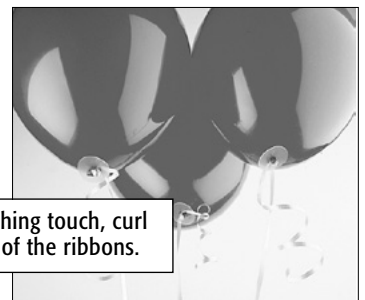
Stretch the balloon and ribbon around the post.

2



Slide the disc over the neck of the balloon.

3



For a finishing touch, curl the ends of the ribbons.

## Service & Warranty

For assistance with service & repair issues, or for warranty information, please visit [ConwinOnline.com](http://ConwinOnline.com), or call (818) 246.9233



CONWIN INC.  
4510 Sperry Street • Los Angeles, CA 90039  
Phone (818) 246-9233 FAX (818) 246-6862

Online  
Projects  
Designs  
Galleries  
...and more!

[ConwinOnline.com](http://ConwinOnline.com)

01252012

## Conwin's *Portfolio Builders*

### Update Your Portfolio!

A picture is worth a thousand words. Is your portfolio up to date on the latest? Conwin's Portfolio Builder images are the perfect solution for making winning presentations to your clients.



**Visit [ConwinOnline.com](http://ConwinOnline.com) today!**