



# Single Cylinder Under Counter Remote Helium Set-Up

## Instruction Sheet



### Mounting Cylinder Wall Bracket

Hold Cylinder Safety Wall Bracket against the wall and outline mounting holes with a pencil. For maximum support, position the bracket above the middle section of the cylinder just below the crown of the cylinder.

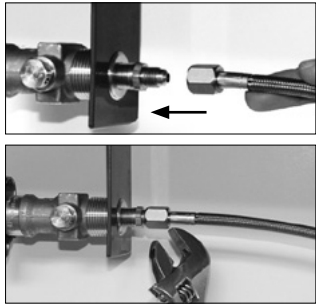
#### Mounting on a Wood Surface

- Drill an 1/8" pilot hole.
- Mount with screw provided.

#### Mounting on a Drywall Surface

- Drill a 1/4" pilot hole.
- Insert the anchor into the pilot hole.
- Mount with screw provided.

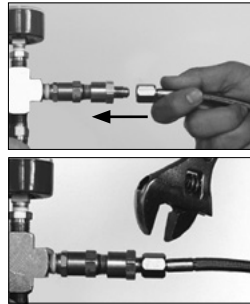
### Mounting Under Countertop Outlet & Connecting High Pressure Hose



**STEP 1.** Drill out pilot holes and attach the Under Countertop Outlet to the counter with screws provided. Wrench-tighten the helium supply hose onto the Undercounter Outlet. Run the hose along the desired path to the cylinder.



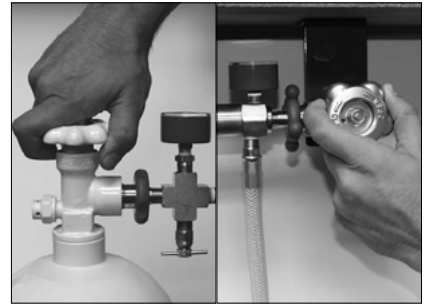
**STEP 2.** Hand-tighten the regulator assembly to the helium cylinder.



**STEP 3.** Wrench-tighten the helium supply hose to the regulator assembly.



**STEP 4.** Hand-tighten the inflator's primary regulator to the Undercountertop Outlet.



**STEP 5.** Slowly open the cylinder valves on both the regulator assembly and the Undercounter Outlet. Make sure the valves are fully opened. The cylinder pressure will read on the gauge located on the regulator assembly. The inlet pressure will read on the adjustable regulator gauge located on the back of the inflator.

### Changing Cylinders



**STEP 1.** Close the cylinder valve tightly. Note: It is not necessary to close the valve on the Under Counter Outlet.



**STEP 2.** Open the bleed valve to release the pressure from the regulator assembly.



**STEP 3.** Remove the regulator assembly and replace cylinder. Hand-tighten the regulator assembly to the full helium cylinder. Close bleed valve.



**STEP 4.** Slowly open the cylinder valve on the regulator assembly. Make sure the valve is fully opened. The cylinder pressure will read on the gauge located on the regulator assembly. The inlet pressure will read on the adjustable regulator gauge located on the back of the inflator.



CONWIN INC.  
4510 Sperry Street • Los Angeles, CA 90039  
Phone (818) 246-9233 FAX (818) 246-6862

### Service & Warranty

For assistance with service & repair issues please call (818) 246-9233 or visit [ConwinOnline.com](http://ConwinOnline.com).